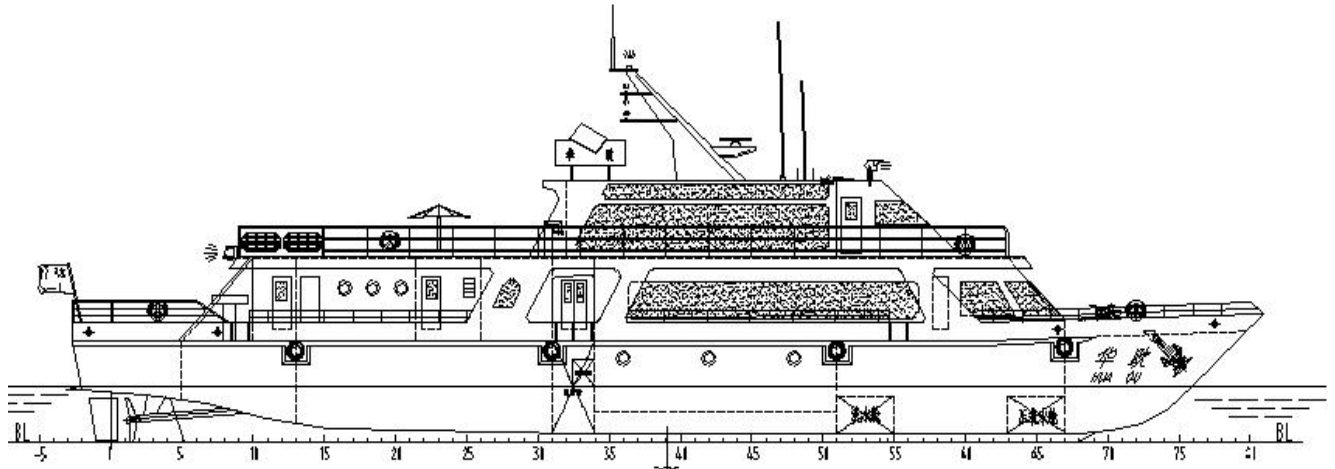


## “HUA-OU” PASSENGER VESSEL



### GENERAL DESCRIPTION

This vessel is a double propeller ,double diesel engines driven costal passenger vessel . Hull is made of steel and the superstructure is made of aluminium .A large passenger hall on the main deck can hold 74 passengers. A vip class passenger hall located on the wheel deck can hold 24 passengers. The vessel services between TSINGTAO and HUANGDAO the port around JIAOZHOU GULF. It can withstand the wind of BF. Scale 8.

### PRINCIPAL PARTICULARS

Loa abt.	41.80 m	Service speed	17 kn (Full load)
Lwl	39.00 m	(MCR)	
B	6.60 m		
Bwl	5.75 m	Endurance	800 n.mile
D	3.30 m	Complement	6
d	1.60 m	Passenger	98 p

### CAPACITY

D.O.T.	abt.13.0 m <sup>3</sup>
F.W.T.	abt. 2.5 m <sup>3</sup>
W.B.T	abt. 5.0 m <sup>3</sup>
L.O.T	abt.0.5 m <sup>3</sup>

### CLASS NOTATION

CCS CSA 5/ 5 , CSM BRC

FLAG: CHINA

### MAIN ENGINE

Type TBD 604BL6 2 set  
MCR: 637 kW x 1800 r/min

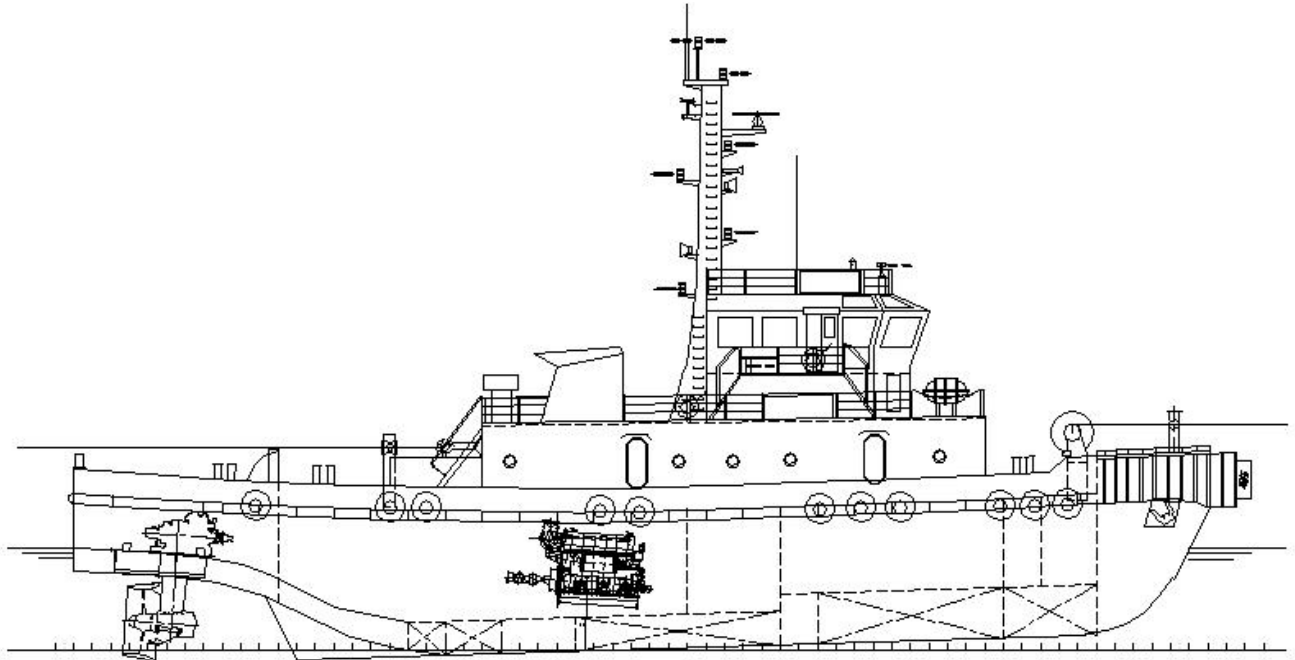
### GENERATOR

Main Generator 2 x 64 kW, 1500 r/min

### EQUIPMENT

Aviation chair 98 sets

## 2,600HP HARBOR TUG BOAT



### GENERAL DESCRIPTION

The vessel is a schottle multipurpose Tug designed for harbour and coastal duties in and around NINGBO ports. In emergencies shall be used for. salvage and oil dispersion activities. On occasions shall be engaged in towing duties along coast under wind strength of Bf 6, cross current of 3 knots and wave height of 3 m. Berthing duties will include the handling of general cargo vessels. car carriers. container ships and L.P.G. carriers.

### PRINCIPAL PARTICULARS

Loa abt.	33.60 m	Free speed	12.5 kn	$d_{\text{designed}}$
Lpp	33.00 m	(MCR)		
B	9.40 m	Bollard pull	32 t	
D	4.10 m	Complement	14 P	
$d_{\text{designed}}$	3.00 m			

### CAPACITY

Liquid Tank	m <sup>3</sup>
D.O.T.	50 m <sup>3</sup>
F.W.T.	15 m <sup>3</sup>

### CLASS NOTATION

CCS ★CSA Tug ,CSM BRC

FLAG: CHINA

### MAIN ENGINE

Type MAN B&W 2 set  
MCR: abt. 1300HP x 900 r/min

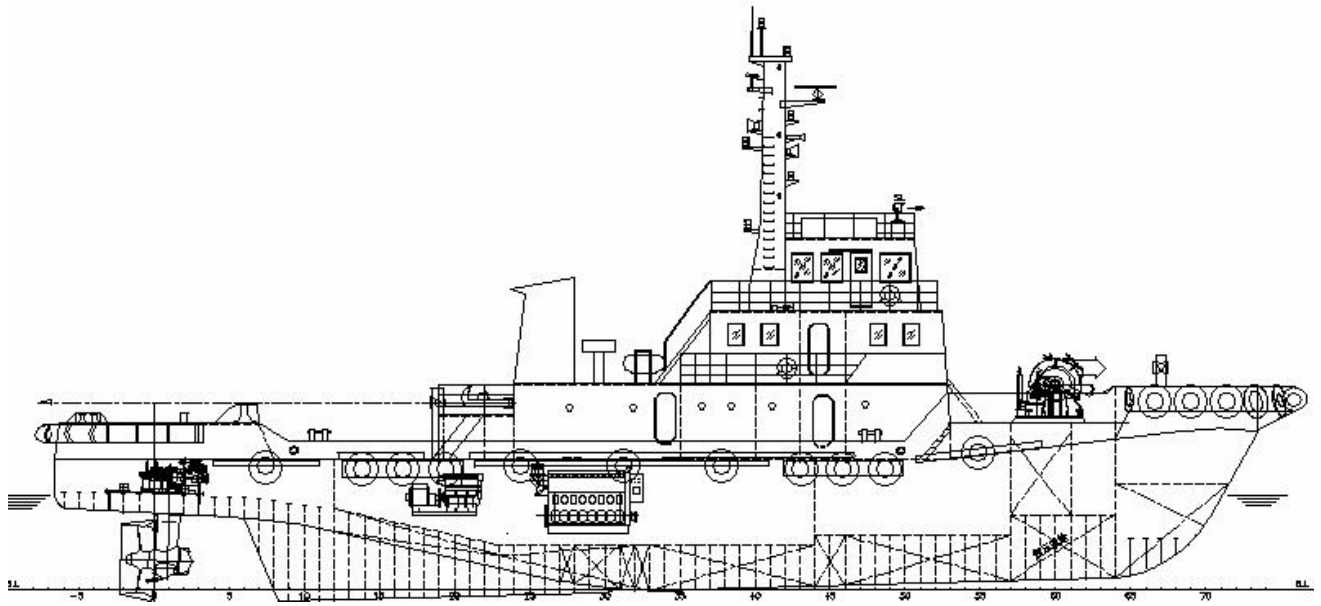
### GENERATOR

Main Generator 2 x 100 kW, 1500 r/min  
400V, 50 Hz

### EQUIPMENT

Z-DRIVE PROPULSION SYSTEM x 2set ; TUG HOOK; MORRING WINCH

## 3,200HP HARBOR TUG BOAT



### GENERAL DESCRIPTION

The vessel is a schottle multipurpose Tug designed for harbour and coastal duties in and around NINGBO ports. In emergencies shall be used for. salvage and oil dispersion activities. On occasions shall be engaged in towing duties along coast under wind strength of Bf 6, cross current of 3 knots and wave height of 3 m. Berthing duties will include the handling of general cargo vessels. car carriers. container ships and L.P.G. carriers.

### PRINCIPAL PARTICULARS

Loa abt.	40.00 m	Free speed	14.0 kn	$d_{\text{designed}}$
Lpp	33.00 m	(MCR)		
B	9.30 m	Bollard pull	42 t	
D	4.20 m	Complement	16 P	
$d_{\text{designed}}$	3.10 m			

### CAPACITY

Liquid Tank	m <sup>3</sup>
D.O.T.	60 m <sup>3</sup>
F.W.T.	15 m <sup>3</sup>

### CLASS NOTATION

CCS ★CSA Tug ,CSM BRC

FLAG: CHINA

### MAIN ENGINE

Type MAN B&W 2 set  
MCR: abt. 1600HP x 900 r/min

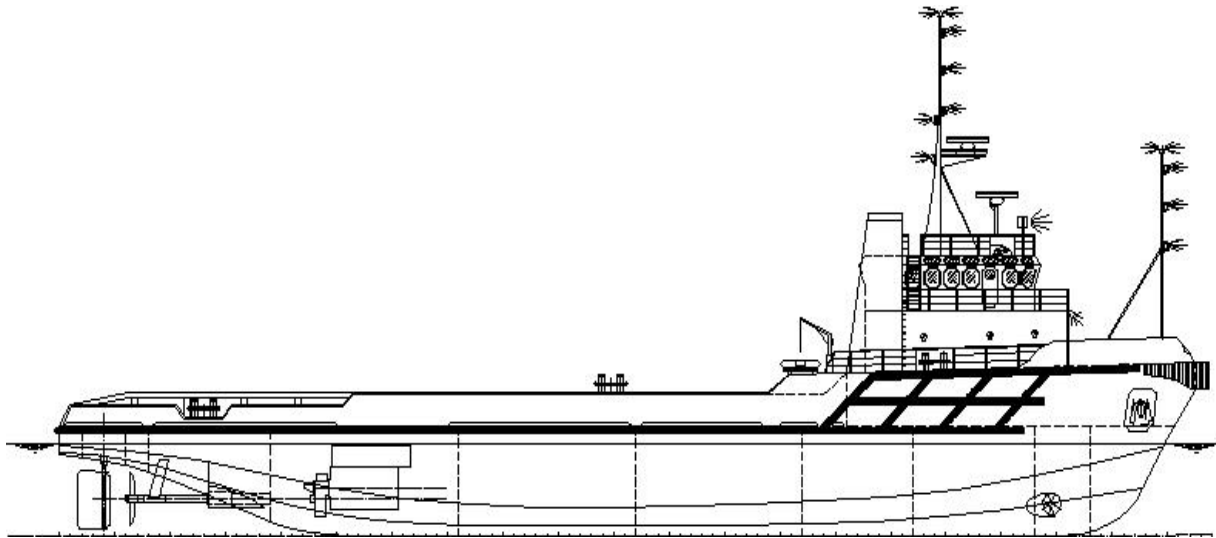
### GENERATOR

Main Generator 2 x 120 kW, 1500 r/min  
400V, 50 Hz

### EQUIPMENT

Z-DRIVE PROPULSION SYSTEM x 2set ; TUG HOOK; MORRING WINCH

## 5,000HP OFFSHORE SUPPLY VESSEL



### GENERAL DESCRIPTION

This vessel is a supply vessel to be capable of Transport of material and equipment on deck(abt.350 m<sup>2</sup>);Transport of cement, mud & brine; Guarding or anchoring for drilling platform and non-self-propelling ship; Supply living material and equipment for drilling platform;Anti-pollution dispersing system. This vessel to be propelled by two diesels driving two fixed pitch propellers via compound reduction gear with engine room , accommodation and navigation space located forward of amidships having forecastle, raked stem and transom stern.

### PRINCIPAL PARTICULARS

Loa abt.	62.50 m	Service speed	12.0 kn	$d_{\text{designed}}$
Lpp	61.00 m	(MCR)		
B	12.80 m	Endurance	5,000	n.mile
D	5.20 m	Complement	12	P
$d_{\text{designed}}$	4.40 m	G. tonnage	abt. 1,000	
Ds	4.50 m			
DWT	1000 T			

### CAPACITY

DECK AREA	350	M <sup>2</sup>
D.O.T.	abt. 280	m <sup>3</sup>
F.W.T.	abt. 330	m <sup>3</sup>
Ballast&Drilling.Tk	abt. 900	m <sup>3</sup>
Liquid mud tk	abt. 300	m <sup>3</sup>
Bulk cement	abt. 140	m <sup>3</sup>

### CLASS NOTATION

ABS +A1(E) Offshore Support Vessel , Safety Standby Service +AMS

**FLAG:** SINGAPORE

### MAIN ENGINE

Type WARTSILA 6L 1 set  
MCR: 1850 kW x 700 r/min

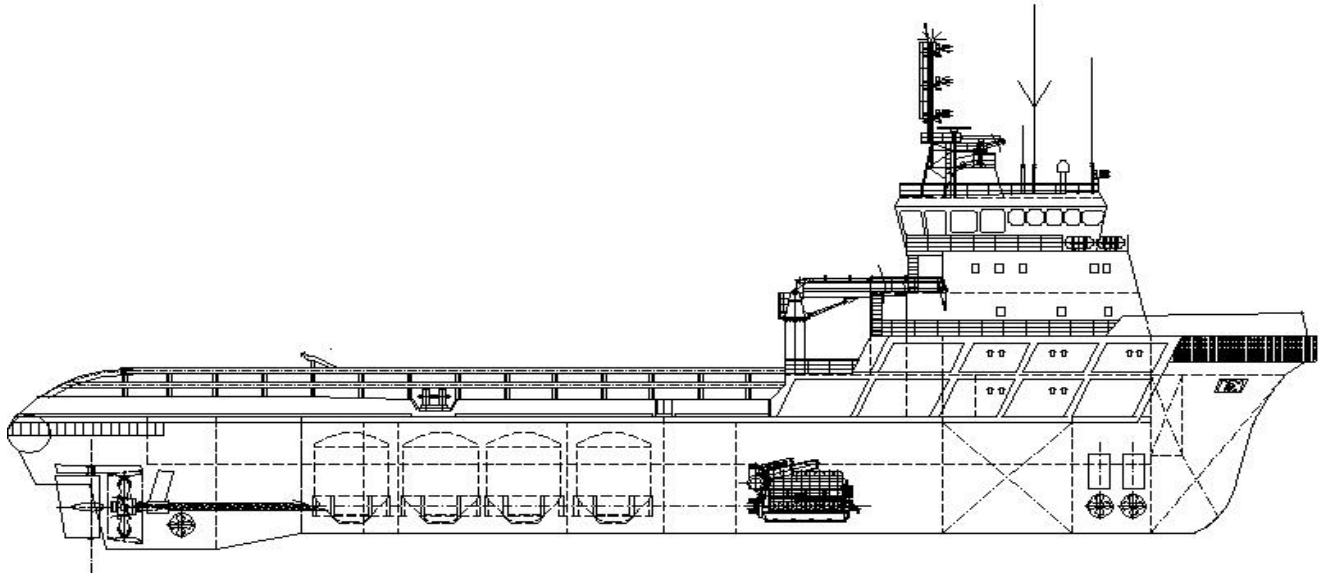
### GENERATOR

Main Generator 2 x 250 kW, 1800 r/min  
Emergency gen. 1 x 85 kW,

### EQUIPMENT

Tunnel thruster ; bulk cement system; mooring winch ;rescue boat; deck crane

# 11,000HP ANCHOR HANDLING/TUG/SUPPLY VESSEL



## GENERAL DESCRIPTION

This vessel is a multi purpose tug. The vessel to be capable of :Towing all types and floating structure; Transport of material and equipment on deck(abt.500 m<sup>2</sup>);Transport of cement, mud & brine; Guarding or anchoring for drilling platform and non-self-propelling ship; Supply living material and equipment for drilling platform; Having grade FF1 fire fighting ability(1200m<sup>3</sup>/h);Anti-pollution dispersing system. This vessel to be propelled by two diesels driving two controllable pitch propellers in fixed nozzles via compound reduction gear with engine room, accommodation and navigation space located forward of amidships having forecastle, raked stem and transom stern.

## PRINCIPAL PARTICULARS

Loa abt.	69.80 m	Service speed	14.5 kn	$d_{\text{designed}}$
Lpp	62.00 m	(MCR)		
B	15.60 m	Endurance	6,000	n.mile
D	7.10 m	Complement	12	P
$d_{\text{designed}}$	5.20 m	G. tonnage	abt. 2,000	
Ds	5.80 m	Bollard pull	abt.130	t
DWT	2000	T		

## CAPACITY

DECK AREA	460	M <sup>2</sup>
D.O.T.	abt. 600	m <sup>3</sup>
F.W.T.	abt. 500	m <sup>3</sup>
Ballast&Drilling.Tk	abt. 800	m <sup>3</sup>
Liquid mud tk	abt. 425	m <sup>3</sup>
Brine/base oil tk	abt. 515	m <sup>3</sup>
Bulk cement	abt. 220	m <sup>3</sup>

## CLASS NOTATION

ABS +A1(E)AH / Offshore Support Vessel , Towing Service , Fire Fighting Vessel Class1,Safety Standby Service +AMS , +ACCU , +DPS-1

**FLAG:** SINGAPORE

## MAIN ENGINE

Type WARTSILA 9L32B 1 set  
MCR: 4140 kW x 750 r/min

## GENERATOR

Main Generator 2 x 338 kW, 900 r/min  
Shaft Generator 2 x 1600 kW,

## EQUIPMENT

Tunnel thruster ; towing winch; anchor shark ; dps system; bulk cement system; cpp ; mooring winch ;rescue boat;crane