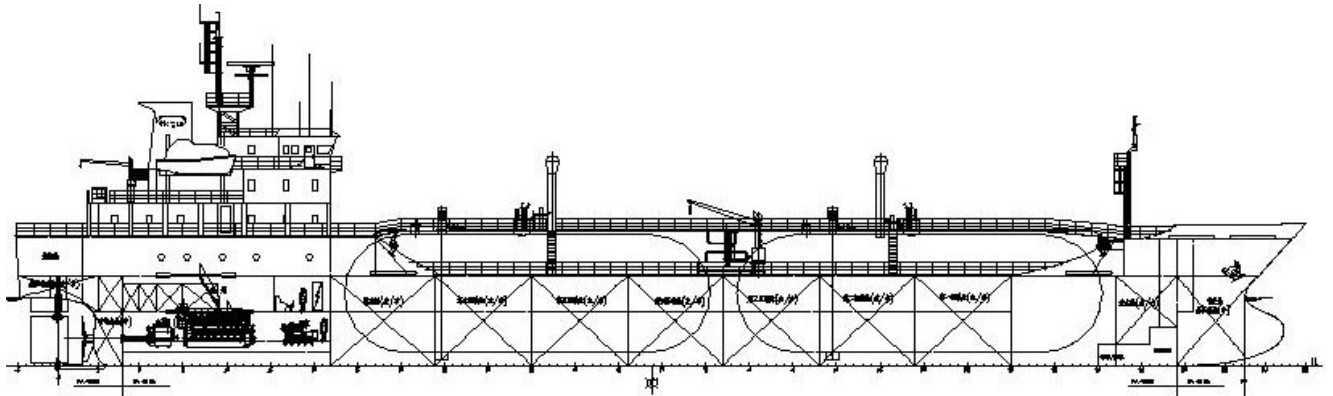


3200m³ LPG CARRIER (‘GROWING’ SERIES)



GENERAL DESCRIPTION

The vessel is a single screw motor driven LPG carrier with machinery and accommodation located aft, having forecastle and poop with three tiers of deck house. Two cylindrical pressure vessels with hemispherical ends are installed in two double side skin and single bottom cargo holds. The cargo handling plant and containment system can load/unload 3200m³ LPG in about 10 hours. The cargo handling system is designed for loading, transporting and discharging one grade of cargo at a time. The vessel is capable of carrying propane, butanes, propylene, butylenes, butadiene, commercial propane, LPG and VCM.

PRINCIPAL PARTICULARS

Loa abt.	96.2 m	Service speed	13.0 kn	d _{designed}
Lpp	88.6 m	(CSR)		
B	14.4 m	Endurance	6,000	n.mile
D	7.0 m	Complement	20	P
d _{designed}	5.3 m	G. tonnage	abt. 2,850	
DWT	2650 t			
Ds	5.3 m	F.O.C.	abt.9.1 t/d	+5%toler.
DWT	2650 t	(F.O. 10,200	kcal/kg under	ISO)

CAPACITY

Cargo Hold	abt.	3200	m ³
Liquid Tank			m ³
F.O.T.		286	m ³
D.O.T.		85	m ³
F.W.T.		145	m ³
W.B.T.	abt.	1500	m ³

CLASS NOTATION

CCS ★ CSA Liquefied Gas Carrier, Type 2PG, Ice Class B; ★ CSM BRC

FLAG: China

MAIN ENGINE

Type	8320ZCD-6	1 set
MCR:	abt. 2060 kW x	525 r/min
CSR :	abt. 1854 kW x	498 r/min

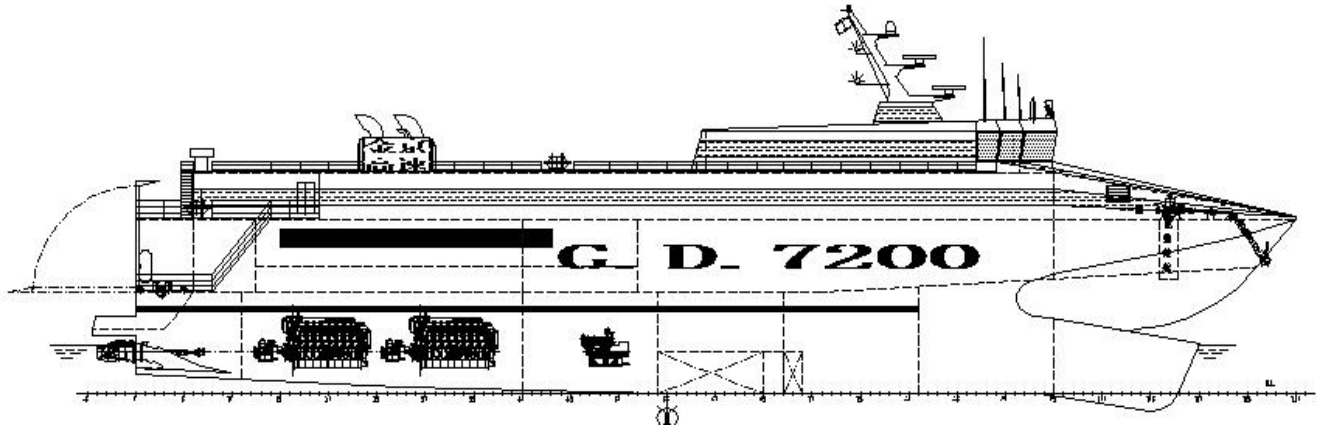
GENERATOR

Main Generator	3 x 200 kW,	1500 r/min
	400V,	50 Hz
Emer. Generator	1 x 90 kW,	1500 r/min
	400V,	50 Hz

EQUIPMENT

Pressure vessels	2 sets	Life boat and davit	2 sets
Cargo handling sys	1sets	Work boat	1 sets
Hose crane	2 sets	Deck powder sys	1 sets
Provision crane	1sets	Deck spray sys	1 sets

G.D.7200 RO-RO PASSENGER WAVEPIERCING CATAMARAN (‘GLORY’ SERIES)



GENERAL DESCRIPTION

This vessel is a four water jets, four diesel engines driven ro-ro passenger wave piercing catamaran. The ship's hull and the superstructure to be made of aluminium. With a huge ro-ro deck the vessel can carry 70 cars or 4 coaches and 55 cars. Passenger deck to be divided into two passenger hall. 400 passengers can be hold. Gallery, mess room smoking room, duty room, office, etc. are located on both end of passenger deck. Wheel house is at fore end of the third tier superstructure adjacent to crew accommodation area. Chopper deck is arranged on the aft area of the third tier deck. With excellent sea-worthiness capability, passengers can enjoy the high speed riding (light load 40kn / full load 35kn).

PRINCIPAL PARTICULARS

Loa abt.	72.00 M	Service speed	35 kn (Full load)
Lpp	66.00 M	Trial speed	>40kn (light load)
B	22.00 M	(MCR)	
Bp	4.30 M	Endurance	400 n.mile
D	6.10 M	Complement	24
d	3.00 m	Car	70 car
DWT	265 t	Passenger	400 p

CAPACITY

D.O.T.	abt. 60	m ³
F.W.T.	abt. 12	m ³
W.B.T	abt. 100	m ³
L.O.T	abt. 6.0	m ³

CLASS NOTATION

CCS ★CSA(H) 5/5, ★CSM(H) BRC

FLAG: SINGAPORE

MAIN ENGINE

Type CATAPILLAR 3616fcvr 4set
MCR: 5650 kW x 1000 r/min

GENERATOR

Main Generator 2 x 250 kW, 1500 r/min

EQUIPMENT

Water jet x 4 sets ; ramp(door) x 1set