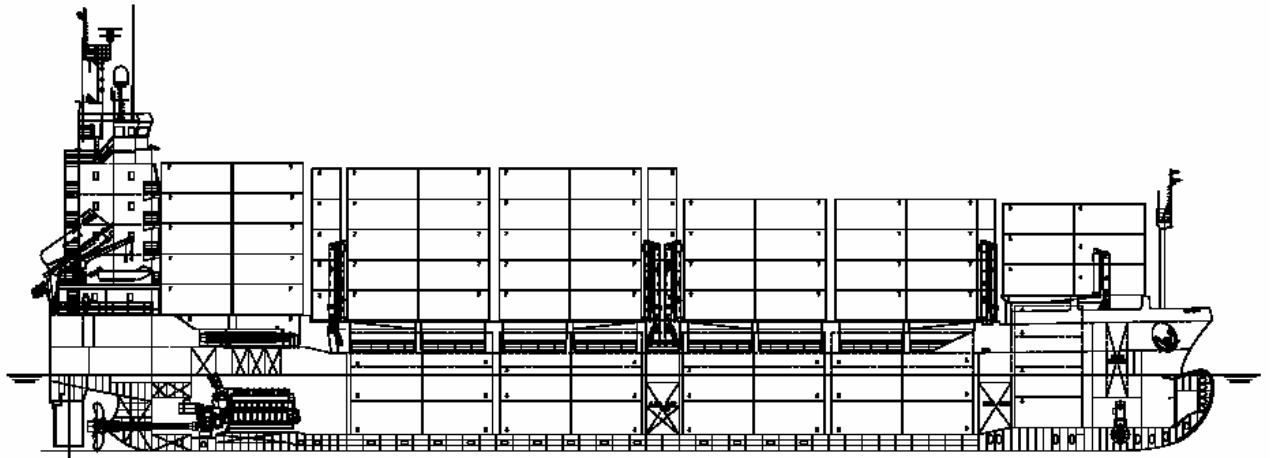


500TEU CONTAINER SHIP



GENERAL DESCRIPTION

The vessel is a single screw motor driven full cell guide container ship with machinery and accommodation located aft, having forecastle and seven tiers of deck house. Three (3) cargo holds with folding type hatch covers are arranged. Three tiers of 9'6" height container can be loaded in holds. Hold No.1 & 2 are equipped for carriage of dangerous cargo.

PRINCIPAL PARTICULARS

| | | | | |
|-----------------------|----------|---------------|---------------|-----------------------|
| Loa abt. | 101.00 m | Service speed | 16.0 kn | d_{designed} |
| Lpp | 95.50 m | (CSR+15%SM) | | |
| B | 18.50 m | Endurance | 8,000 | n.mile |
| D | 8.40 m | Complement | 20 | P |
| d_{designed} | 6.60 m | | | |
| DWT | 5,550 t | | | |
| DScantling | 6.60 m | F.O.C. | abt. 18.7 t/d | +5%toler. |
| DWT | 5,550 T | (F.O. 10,200 | kcal/kg under | ISO) |

CAPACITY

| | | |
|-----------------|-------|----------------|
| Container total | 520 | TEU |
| In hold | 128 | TEU |
| On deck | 392 | TEU |
| Reefer | 120 | on deck |
| F.O.T. | 400 | m ³ |
| D.O.T. | 80 | m ³ |
| F.W.T. | 80 | m ³ |
| W.B.T. | 1,600 | m ³ |

CLASS NOTATION

GL ✕100A5, E, Container Ship; ✕MC, AUT, E. Hold No.1 and No.2 equipped to carry dangerous cargo in containers (SOLAS II-2, reg.54, dangerous goods suitable loaded in containers)

FLAG: PANAMA

MAIN ENGINE

| | | | |
|-------|-------------|-----------|-------|
| Type | MAK 9M32 MC | 1 set | + CPP |
| MCR: | 4320 kW x | 600 r/min | |
| CSR : | 3888 kW x | 600 r/min | |

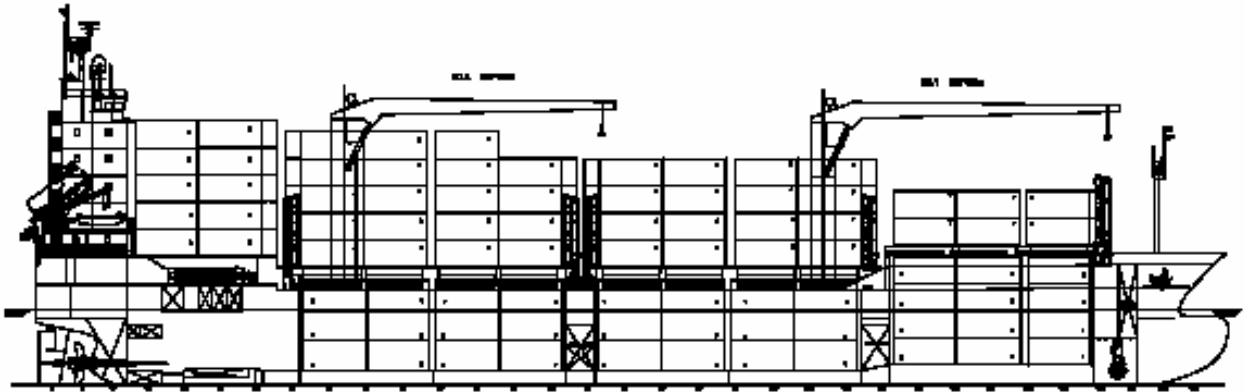
GENERATOR

| | | | |
|-----------------|-------------|------|-------|
| Shaft Generator | 1 x 700 kW, | 400V | 50 Hz |
| Main Generator | 2 x 480 kW, | 1500 | r/min |
| Emer. Generator | 1 x 250 kW, | 1500 | r/min |
| | 400V, | 50 | Hz |

EQUIPMENT

| | | | |
|--------------|------------------|--------------|------------|
| Hatch Cover | Folding type | Bow thruster | 1 x 600 kW |
| Hatch No.1 | 7000 x 10720 mm | | |
| Hatch No.2,3 | 25740 x 13600 mm | | |

600TEU CONTAINER SHIP



GENERAL DESCRIPTION

The vessel is a single screw motor driven full cell guide container ship with machinery and accommodation located aft, having forecastle and seven tiers of deck house. Three (3) cargo holds with folding type hatch covers are arranged. Hold No.1 & 2 are equipped for carriage of dangerous cargo.

PRINCIPAL PARTICULARS

| | | | | |
|------------------------|----------|---------------|----------------|-----------------------|
| Loa abt. | 115.00 m | Service speed | 16.0 kn | d_{designed} |
| Lpp | 109.00 m | (CSR+15%SM) | | |
| B | 20.80 m | Endurance | 5,500 n.mile | |
| D | 9.20 m | Complement | 20 P | |
| d_{designed} | 6.50 m | | | |
| DWT | 6,950 t | | | |
| $D_{\text{Scantling}}$ | 7.20 m | F.O.C. | abt. 19.35 t/d | +5%toler. |
| DWT | 8,300 T | (F.O. 10,200 | kcal/kg under | ISO) |

CAPACITY

| | |
|-----------------|----------------------|
| Container total | 601 TEU |
| In hold | 208 TEU |
| On deck | 393 TEU |
| Reefer | 60 on deck |
| F.O.T. | 550 m ³ |
| D.O.T. | 120 m ³ |
| F.W.T. | 100 m ³ |
| W.B.T. | 3,000 m ³ |

CLASS NOTATION

GL \times 100A5, E, Container Ship; \times MC, AUT, E. Hold No.1 and No.2 equipped to carry dangerous cargo in containers (SOLAS II-2, reg.19, dangerous goods suitable loaded in containers)

FLAG: PANAMA

MAIN ENGINE

| | | |
|-------|----------------|-----------|
| Type | MAN B&W 8S35MC | 1 set |
| MCR: | 5920 kW x | 173 r/min |
| CSR : | 5328 kW x | 167 r/min |

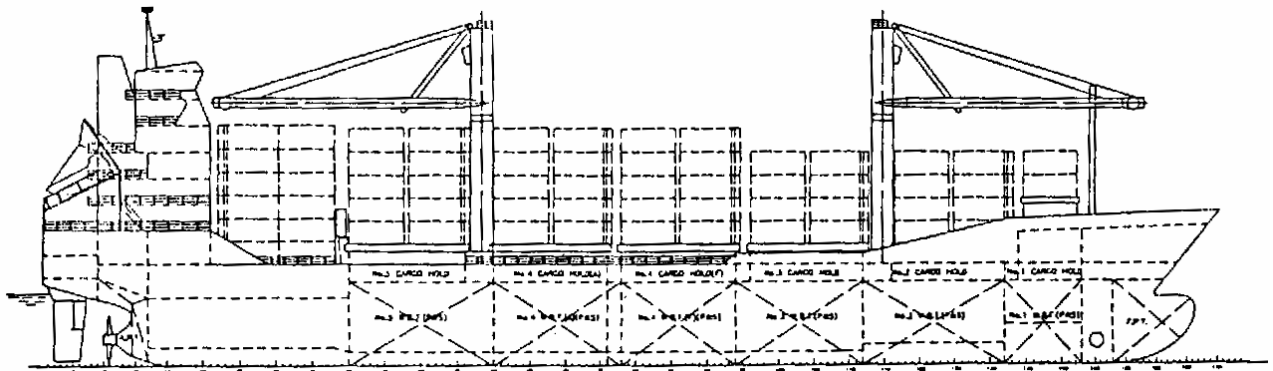
GENERATOR

| | | |
|-----------------|-------------|------------|
| Main Generator | 1 x 600 kW, | 1500 r/min |
| | 2 x 420 kW, | 1500 r/min |
| Emer. Generator | 1 x 140 kW, | 1500 r/min |
| | 400V, | 50 Hz |

EQUIPMENT

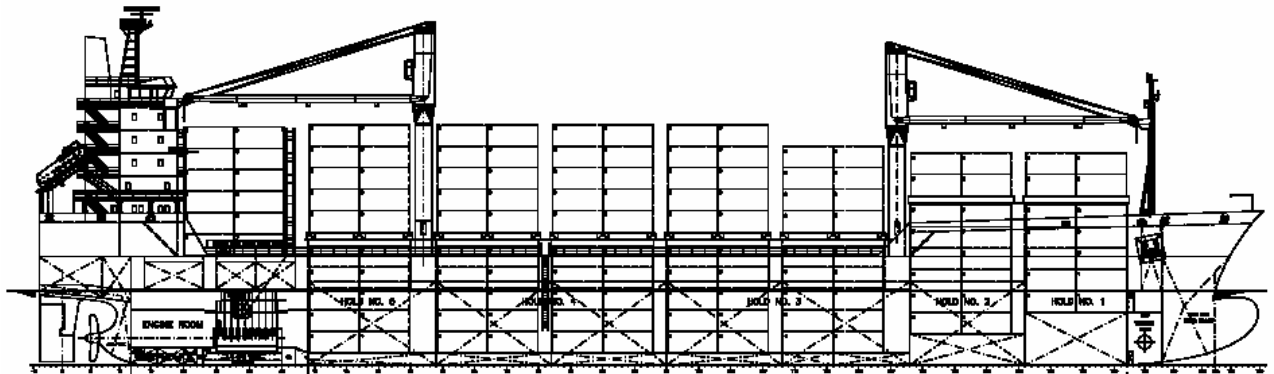
| | | | |
|--------------|------------------|--------------|------------|
| Hatch Cover | Folding type | Bow thruster | 1 x 600 kW |
| Hatch No.1 | 19600 x 12600 mm | | |
| Hatch No.2,3 | 25740 x 17600 mm | | |

800TEU CONTAINER SHIP



| GENERAL DESCRIPTION | | | |
|---|------------------------|---------------------------------|------------------------|
| <p>The vessel is a single screw motor driven full cell guide container ship with machinery and accommodation located aft, having forecastle and seven tiers of deck house. Five (5) cargo holds with pontoon type hatch covers are served by two (2) deck cranes. All cargo holds are equipped for carriage of dangerous cargo.</p> | | | |
| PRINCIPAL PARTICULARS | | | CAPACITY |
| Loa abt. | 131.00 m | Service speed | 17.5 kn d_{design} |
| Lpp | 120.40 m | (CSR+560kW SG+15%SM) | Container total |
| B | 22.80 m | Endurance | 818 TEU |
| D | 11.20 m | Complement | In hold |
| $d_{designed}$ | 8.00 m | 12,000 n.mile | 284 TEU |
| DWT | 9,000 t | 17 P | On deck |
| $D_{Scantling}$ | 8.70 m | F.O.C. abt. 25.8 t/d +5%toler. | 534 TEU |
| DWT | 12,000 T | (F.O. 10,200 kcal/kg under ISO) | Reefer (TEU) |
| | | | 50 on deck |
| | | | F.O.T. |
| | | | 900 m ³ |
| | | | D.O.T. |
| | | | 100 m ³ |
| | | | F.W.T. |
| | | | 150 m ³ |
| | | | W.B.T. |
| | | | 3,000 m ³ |
| CLASS NOTATION | | | |
| <p>GL \times100A5, E, Container Ship; \timesMC, AUT, E. IW. SOLAS II-2, Reg.54 (dangerous goods suitable loaded in containers)</p> | | | |
| FLAG: | | | |
| <p>Antigua</p> | | | |
| MAIN ENGINE | | GENERATOR | |
| Type | MAN B&W 8L48/60 1 set | Shaft Generator | 1 x 600 kW, 400V 50 Hz |
| MCR: | 8400 kW x 500 r/min | Main Generator | 2 x 500 kW, 1500 r/min |
| CSR : | 7560 kW x 500 r/min | Emer. Generator | 1 x 248 kW, 1500 r/min |
| | | | 400V, 50 Hz |
| EQUIPMENT | | | |
| Crane | 2 x 35t x 27.5m | Bow thruster | 1 x 450 kW |
| Hatch Cover | Pontoon type | | |
| Hatch No.1 | 6.40 x 12.80 mm | Hatch No.3-6 | 12.80 x 20.30 Mm |
| Hatch No.2 | 12.80 x 15.20/12.80 Mm | | |

1100TEU CONTAINER SHIP



GENERAL DESCRIPTION

The vessel is a single screw motor driven full cell guide container ship with machinery and accommodation located aft, having forecastle and seven tiers of deck house. Five (5) cargo holds with pontoon type hatch covers are served by two (2) deck cranes. All cargo holds are equipped for carriage of dangerous cargo.

PRINCIPAL PARTICULARS

| | | | | |
|------------------------|----------|---------------|---------------|-----------|
| Loa abt. | 149.15 m | Service speed | 19.4 kn | 8 m draft |
| Lpp | 140.50 m | (CSR+15%SM) | | |
| B | 23.10 m | Endurance | 11,800 n.mile | |
| D | 13.20 m | Complement | 23 P | |
| d _{designed} | 9.00 m | | | |
| DWT | 12,000 t | | | |
| D _{Scantling} | 9.70 m | F.O.C. | abt. 39.4 t/d | +5%toler. |
| DWT | 14,000 T | (F.O. 10,200 | kcal/kg under | ISO) |

CAPACITY

| | |
|-----------------|----------------------|
| Container total | 1098 TEU |
| In hold | 458 TEU |
| On deck | 640 TEU |
| F.O.T. | 1,000 m ³ |
| D.O.T. | 120 m ³ |
| F.W.T. | 150 m ³ |
| W.B.T. | 4,800 m ³ |

CLASS NOTATION

GL ⚠100A5, E, Container Ship; ⚠MC, AUT, E. SOLAS II-2, Reg.54 (dangerous goods suitable loaded in containers)

FLAG: Antigua

MAIN ENGINE

| | | |
|-------|------------|-----------|
| Type | SULZER | 1 set |
| MCR: | 10880 kW x | 124 r/min |
| CSR : | 9792 kW x | 120 r/min |

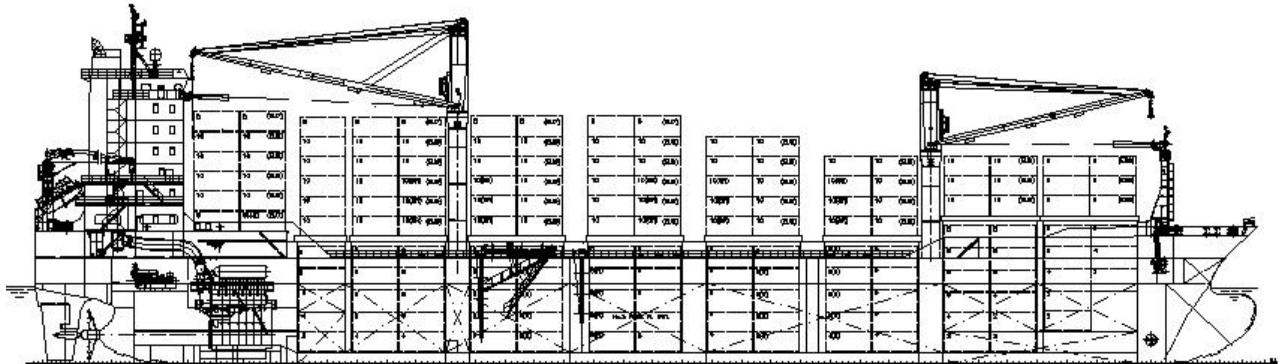
GENERATOR

| | | |
|-----------------|-------------|------------|
| Main Generator | 3 x 740 kW, | 720 r/min |
| | 450V, | 60 Hz |
| Emer. Generator | 1 x 99 kW, | 1800 r/min |
| | 450V, | 60 Hz |

EQUIPMENT

| | | | |
|-------------|------------------|--------------|------------------|
| Crane | 2 x 45t x 28m | Bow thruster | 1 x 700 kW |
| Hatch Cover | Pontoon type | | |
| Hatch No.1 | 12480 x 12868 mm | Hatch No.3-7 | 12480 x 20514 mm |
| Hatch No.2 | 12480 x 17900 Mm | | |

1300TEU CONTAINER SHIP



GENERAL DESCRIPTION

The vessel is a single screw motor driven full cell guide container ship with machinery and accommodation located aft, having forecastle and seven tiers of deck house. Four (4) cargo holds with pontoon type hatch covers are served by two (2) deck cranes. Three tiers of 9'6" and two tiers of 8'6" height container can be loaded in holds. Euro wide body container can also be loaded on hatch covers. Hold No.1 & 2 are equipped for carriage of dangerous cargo. No.2 & 3 hold are equipped for reefers.

PRINCIPAL PARTICULARS

| | | | | |
|------------------------|----------|---------------|---------------|-----------------------|
| Loa abt. | 162.00 m | Service speed | 19.6 kn | d_{designed} |
| Lpp | 151.00 m | (CSR+15%SM) | | |
| B | 25.00 m | Endurance | 13,000 n.mile | |
| D | 13.90 m | Complement | 20 P | |
| d_{designed} | 9.00 m | | | |
| DWT | 14,800 t | | | |
| $D_{\text{Scantling}}$ | 9.90 m | F.O.C. | abt. 49.7 t/d | +5%toler. |
| DWT | 17,650 T | (F.O. 10,200 | kcal/kg under | ISO) |

CAPACITY

| | |
|-----------------|-----------------------|
| Container total | 1304 TEU |
| In hold | 492 TEU |
| On deck | 812 TEU |
| Reefer | 250 TEU (120 in Hold) |
| F.O.T. | 1,600 m ³ |
| D.O.T. | 120 m ³ |
| F.W.T. | 250 m ³ |
| W.B.T. | 8,000 m ³ |

CLASS NOTATION

GL ✕100A5, E3, Container Ship; ✕MC, AUT, E3. Hold No.1 and No.2 equipped to carry dangerous cargo in containers (SOLAS II-2, reg.54, dangerous goods suitable loaded in containers)

FLAG: Germany

MAIN ENGINE

| | | |
|-------|------------------|-----------|
| Type | MAN B&W 6S60MC-C | 1 set |
| MCR: | 13530 kW x | 105 r/min |
| CSR : | 12177 kW x | 101 r/min |

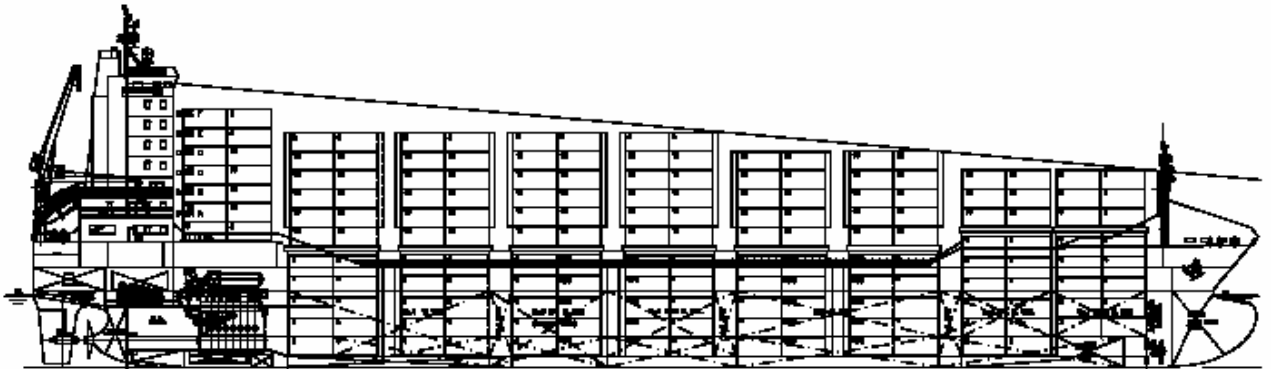
GENERATOR

| | | |
|-----------------|-------------|------------|
| Main Generator | 3 x 940 kW, | 900 r/min |
| | 450V, | 60 Hz |
| Emer. Generator | 1 x 250 kW, | 1800 r/min |
| | 450V, | 60 Hz |

EQUIPMENT

| | | | |
|-------------|---------------------|--------------|--------------|
| Crane | 1 x 45/40t x 29/26m | Bow thruster | 1 x 800 kW |
| | 1 x 45/40t x 31/35m | | |
| Hatch Cover | Pontoon type | | |
| Hatch No.1 | 12.48 x 15.60 m | Hatch No.8 | 6.24 x 20.56 |
| Hatch 2-7 | 12.48 x 20.56 m | | |

1 490TEU CONTAINER SHIP



GENERAL DESCRIPTION

The vessel is a single screw motor driven full cell guide container ship with machinery and accommodation located aft, having forecastle and seven tiers of deck house. Four (4) cargo holds with pontoon type hatch covers are arranged. Three tiers of 9'6" and two tiers of 8'6" height container can be loaded in hold 2-4. Euro wide body and 45' container can also be loaded on hatch covers. Hold No.1-3 are equipped for carriage of dangerous cargo. No.2-4 hold are equipped for reefers.

PRINCIPAL PARTICULARS

| | | | | |
|-----------------|----------|---------------|---------------|-----------------|
| Loa abt. | 169.95 m | Service speed | 20 kn | $D_{Scantling}$ |
| Lpp | 160.00 m | (CSR+800kW | SG+15%SM) | |
| B | 25.00 m | Endurance | 13,000 | n.mile |
| D | 13.90 m | Complement | 20 | P |
| $d_{designed}$ | 10.00 m | | | |
| DWT | 20,100 t | | | |
| $D_{Scantling}$ | 10.00 m | F.O.C. | abt. 59.8 t/d | +5%toler. |
| DWT | 20,100 T | (F.O. 10,200 | kcal/kg under | ISO) |

CAPACITY

| | | |
|-----------------|---------|----------------|
| Container total | 1490 | TEU |
| In hold | 530 | TEU |
| On deck | 960 | TEU |
| Reefer | 350 TEU | (168 in Hold) |
| F.O.T. | 2,000 | m ³ |
| D.O.T. | 150 | m ³ |
| F.W.T. | 200 | m ³ |
| W.B.T. | 8,000 | m ³ |

CLASS NOTATION

GL \times 100A5, E3, Container Ship; \times MC, AUT, E3; IW. SOLAS II-2, reg.54 (dangerous goods suitable loaded in containers)

FLAG: PANAMA

MAIN ENGINE

| | | |
|-------|--------------------|-----------|
| Type | SULZER 7RT-flex60C | 1 set |
| MCR: | 16520 kW x | 114 r/min |
| CSR : | 14868 kW x | 110 r/min |

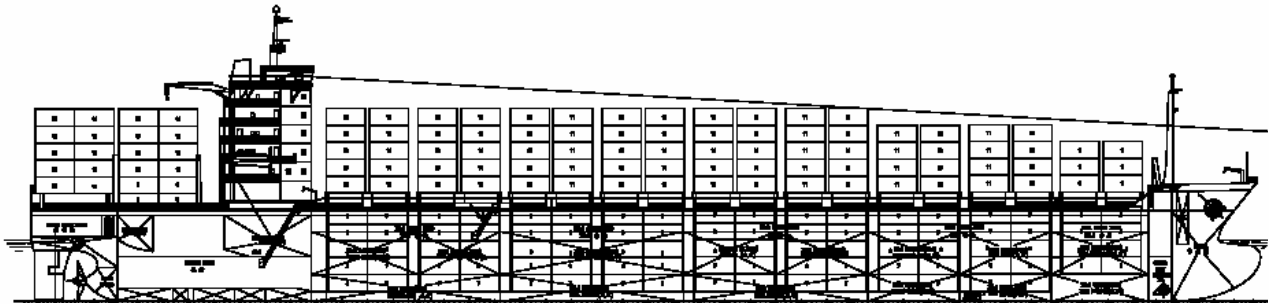
GENERATOR

| | | |
|-----------------|--------------|------------|
| sHAFT Generator | 1 x 1000 kW, | 900 r/min |
| Main Generator | 3 x 1400 kW, | 900 r/min |
| Emer. Generator | 1 x 250 kW, | 1800 r/min |
| | 450V, | 60 Hz |

EQUIPMENT

| | | | |
|-------------|-----------------|--------------|------------|
| Hatch Cover | Pontoon type | Bow thruster | 1 x 800 kW |
| Hatch No.1 | 12.48 x 15.60 m | | |
| Hatch 2-8 | 12.48 x 20.56 m | | |

1770TEU CONTAINER SHIP



n

GENERAL DESCRIPTION

The vessel is a single screw motor driven full cell guide container ship with machinery and accommodation located aft, having forecastle and seven tiers of deck house. Five (5) cargo holds with pontoon type hatch covers are arranged. Three tiers of 9'6" and two tiers of 8'6" height container can be loaded in holds. Euro wide body container can also be loaded on hatch covers. Hold No.1-4 are equipped for carriage of dangerous cargo.

PRINCIPAL PARTICULARS

| | | | | |
|------------------------|----------|---------------|---------------|-----------------------|
| Loa abt. | 191.00 m | Service speed | 21.0 kn | d_{designed} |
| Lpp | 182.00 m | (CSR+15%SM) | | |
| B | 28.00 m | Endurance | 16,000 | n.mile |
| D | 14.10 m | Complement | 30 | P |
| d_{designed} | 9.00 m | G. tonnage | abt. 22,650 | |
| DWT | 18,700 t | | | |
| $D_{\text{Scantling}}$ | 9.50 m | F.O.C. | abt. 57.6 t/d | +5%toler. |
| DWT | 21,000 T | (F.O. 10,200 | kcal/kg under | ISO) |

CAPACITY

| | | |
|-----------------|--------|----------------|
| Container total | 1776 | TEU |
| In hold | 652 | TEU |
| On deck | 1124 | TEU |
| Reefer (TEU) | 200 | on deck |
| F.O.T. | 2,100 | m ³ |
| D.O.T. | 160 | m ³ |
| F.W.T. | 250 | m ³ |
| W.B.T. | 10,500 | m ³ |

CLASS NOTATION

GL ✕100A5, Container Ship; ✕MC, AUT; IW. SOLAS II-2, reg.54 (dangerous goods suitable loaded in containers)

FLAG: PANAMA

MAIN ENGINE

| | | |
|-------|------------------|-----------|
| Type | MAN B&W 7S60MC-C | 1 set |
| MCR: | 15820 kW x | 105 r/min |
| CSR : | 14238 kW x | 101 r/min |

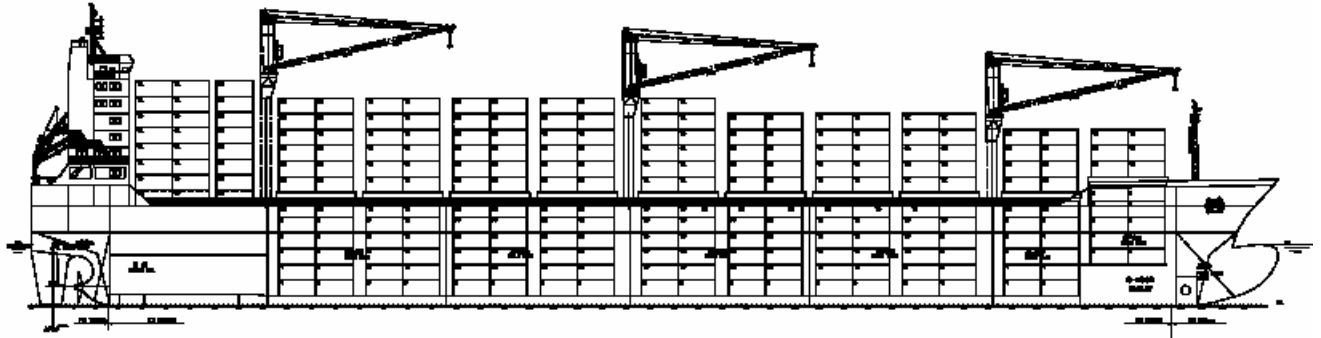
GENERATOR

| | | |
|-----------------|--------------|------------|
| Main Generator | 3 x 1200 kW, | 900 r/min |
| | 450V, | 60 Hz |
| Emer. Generator | 1 x 99 kW, | 1800 r/min |
| | 450V, | 60 Hz |

EQUIPMENT

| | | | |
|-------------|---------------------|--------------|------------|
| Hatch Cover | Pontoon type | Bow thruster | 1 x 900 kW |
| Hatch No.1 | 12.64 x 13.00/7.6 m | | |
| Hatch No.2 | 12.64 x 18.00 m | | |
| Hatch 3-9 | 12.64 x 23.20 m | | |

2500TEU CONTAINER SHIP



GENERAL DESCRIPTION

The vessel is a single screw motor driven full cell guide container ship with machinery and accommodation located aft, having forecastle and seven tiers of deck house. Six (6) cargo holds with pontoon type hatch covers are served by three deck cranes. No.4, 5 & 6 hold are equipped for reefers.

PRINCIPAL PARTICULARS

| | | | | |
|-----------------|----------|---------------|---------------|-----------------|
| Loa abt. | 208.00 m | Service speed | 22.0 kn | $d_{scantling}$ |
| Lpp | 196.00 m | (CSR+15%SM) | at scantling | draft |
| B | 30.00 m | Endurance | 16,000 | n.mile |
| D | 16.50 m | Complement | 25 | P |
| $d_{designed}$ | 10.10 m | | | |
| DWT | 27,000 t | | | |
| $D_{scantling}$ | 11.55 m | F.O.C. | abt. 89.4 t/d | +5%toler. |
| DWT | 34,000 T | (F.O. 10,200 | kcal/kg under | ISO) |

CAPACITY

| | | |
|-----------------|---------|----------------|
| Container total | 2508 | TEU |
| In hold | 990 | TEU |
| On deck | 1518 | TEU |
| Reefer | 400 TEU | (100 in Hold) |
| F.O.T. | 3,500 | m ³ |
| D.O.T. | 200 | m ³ |
| F.W.T. | 200 | m ³ |
| W.B.T. | 9,000 | m ³ |

CLASS NOTATION

GL \times 100A5, Container Ship; IW; \times MC, AUT. Hold No.1-5 equipped to carry dangerous cargo in containers (SOLAS II-2, Reg.19, dangerous goods suitable loaded in containers)

FLAG: Germany

MAIN ENGINE

| | | |
|-------|------------------|----------|
| Type | MAN B&W 8S70MC-C | 1 set |
| MCR: | 24840 kW x | 91 r/min |
| CSR : | 22356 kW x | 88 r/min |

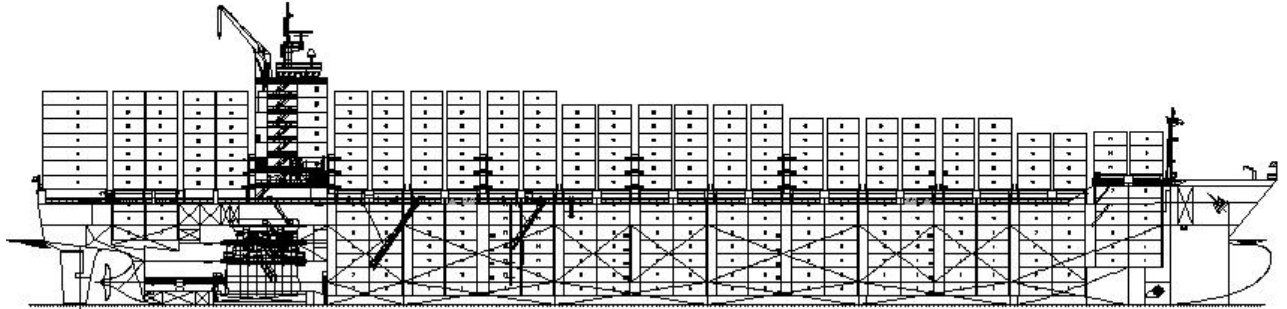
GENERATOR

| | | |
|-----------------|--------------|------------|
| Main Generator | 3 x 1600 kW, | 900 r/min |
| | 450V, | 60 Hz |
| Emer. Generator | 1 x 180 kW, | 1800 r/min |
| | 450V, | 60 Hz |

EQUIPMENT

| | | | |
|-------------|---------------------|--------------|-------------|
| Crane | 3 x 45/40t x 23/27m | Bow thruster | 1 x 1000 kW |
| Hatch Cover | Pontoon type | | |
| Hatch No.1 | 12.80 x 20.40 m | | |
| Hatch 2-10 | 12.80 x 25.60 m | | |

3500TEU CONTAINER SHIP



GENERAL DESCRIPTION

The vessel is a single screw motor driven full cell guide container ship with machinery and accommodation located aft, having forecabin and nine tiers of deck house. Seven (7) cargo holds with pontoon type hatch covers are arranged. Hold Nos.2-6 are equipped for reefer containers.

PRINCIPAL PARTICULARS

| | | | | | |
|------------------------|--------|---|---------------|----------------|-----------------------|
| Loa abt. | 230.80 | M | Service speed | 23.0 kn | d_{designed} |
| Lpp | 214.00 | M | (CSR+15%SM) | | |
| B | 32.20 | M | Endurance | 18,000 | n.mile |
| D | 18.80 | M | Complement | 24 | P |
| d_{designed} | 10.80 | m | G. tonnage | abt. 35,700 | |
| DWT | 35,000 | t | | | |
| $D_{\text{Scantling}}$ | 12.00 | m | F.O.C. | abt. 116.6 t/d | +5%toler. |
| DWT | 42,000 | T | (F.O. 10,200 | kcal/kg under | ISO) |

CAPACITY

| | | |
|-----------------|---------|----------------|
| Container total | 3530 | TEU |
| In hold | 1456 | TEU |
| On deck | 2074 | TEU |
| Reefer 500 TEU | (200 in | Hold) |
| F.O.T. | 4,300 | m ³ |
| D.O.T. | 250 | m ³ |
| F.W.T. | 220 | m ³ |
| W.B.T. | 15,300 | m ³ |

CLASS NOTATION

GL \times 100A5, E, Container Ship; IW, NAV-O; \times MC, AUT, E. SOLAS II-2, Reg.19 (Dangerous cargo suitable loaded in containers)

FLAG: Panama

MAIN ENGINE

| | | |
|-------|------------------|-----------|
| Type | MAN B&W 7K90MC-C | 1 set |
| MCR: | 31990 kW x | 104 r/min |
| CSR : | 28791 kW x | 100 r/min |

GENERATOR

| | | |
|-----------------|--------------|------------|
| Main Generator | 4 x 1200 kW, | 900 r/min |
| | 450V, | 60 Hz |
| Emer. Generator | 1 x 250 kW, | 1800 r/min |
| | 450V, | 60 Hz |

EQUIPMENT

| | | | |
|-------------|------------------------|--------------|-------------|
| Hatch Cover | Pontoon type | Bow thruster | 1 x 1200 kW |
| Hatch No.1 | 12640 x 18124/13088 mm | | |
| Hatch No.2 | 12640x 23160/18124 mm | | |
| Hatch 3-11 | 12640 x 12820 mm | | |
| Hatch No.12 | 12510 x 12820 mm | | |