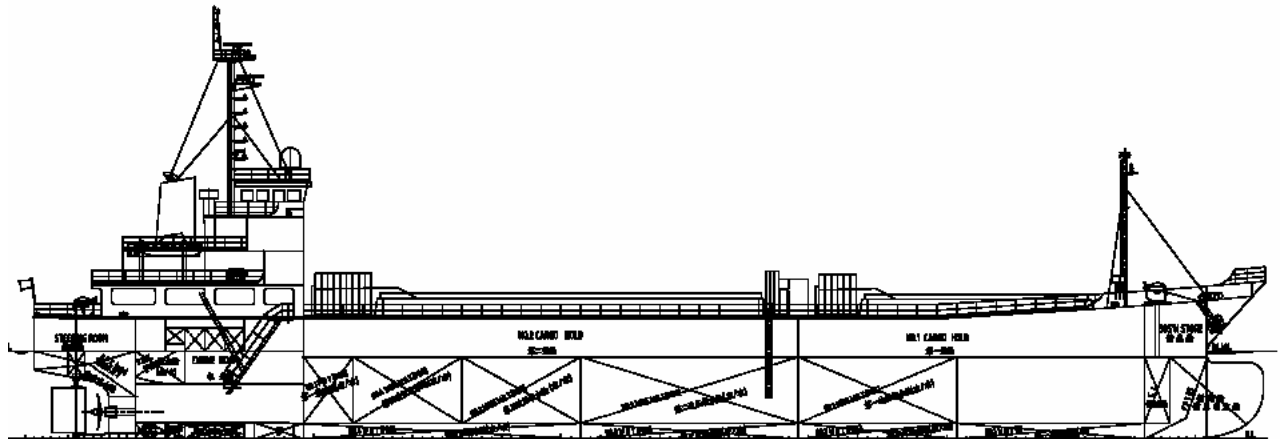


## 3,700DWT GENERAL CARGO SHIP



### GENERAL DESCRIPTION

The vessel is a single screw motor general cargo ship with machinery and accommodation located aft, having forecastle and five tiers of deck house. Two (2) partial double side skin cargo holds with folding type hatch covers are installed. Large hatch openings are arranged. The ship is suitable to general cargoes.

### PRINCIPAL PARTICULARS

Loa abt.	87.60 M	Service speed	abt. 11.0 kn	d <sub>designed</sub>
Lpp	80.00 M	(CSR+15%SM)		
B	14.00 M	Endurance	18,000	n.mile
D	8.50 M	Complement	25	P
d <sub>designed</sub>	6.20 M	G. tonnage	abt. 2,600	
DWT	3,700 T			
Ds	6.20 M	F.O.C.	abt. 25.8 t/d	+5%toler.
DWT	3,700 T	(F.O. 10,200	kcal/kg under	ISO)

### CAPACITY

Cargo Hold	
Grain	abt. 5,000 m <sup>3</sup>
Liquid Tank	
F.O.T.	250 m <sup>3</sup>
F.W.T.	80 m <sup>3</sup>
W.B.T.	abt. 1,500 m <sup>3</sup>

### CLASS NOTATION

CCS ★ CSA General cargo ship; ★ CSM

FLAG: Panama

### MAIN ENGINE

Type	1 set
MCR:	abt. 1,545 kW x 525 r/min
CSR :	abt. 1,313 kW

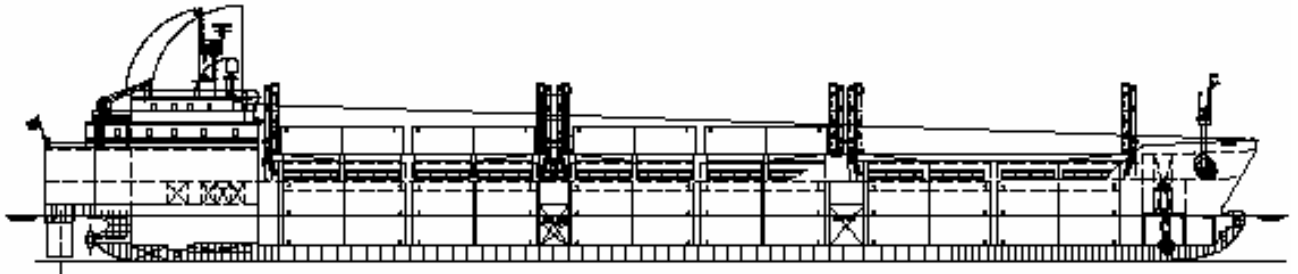
### GENERATOR

Main Generator	2 x 200 kW,	1500 r/min
	400V,	50 Hz
Emer. Generator	1 x 50 kW,	1500 r/min
	400V,	50 Hz

### EQUIPMENT

Crane	Nil
Hatch Cover	
Hold No.1	15.40 x 10.00 m
Hold No. 2-5	25.20 x 10.00 m

## 5,000DWT SHALLOW WATER MPC



### GENERAL DESCRIPTION

The vessel is a single screw motor driven multipurpose ship with machinery and accommodation located aft, having forecastle and two tiers of deck house. Three (3) cargo holds with folding type hatch covers are arranged. Three tiers of container can be loaded in holds. The vessel is designed for shallow water voyage with small water draft and air draft. Hold No.1 & 2 are equipped for carriage of dangerous cargo of IMO Class 1.4s, 2, 3, 4, 5.1, 6.1, 8 & 9.

### PRINCIPAL PARTICULARS

Loa abt.	119.80 m	Service speed	11.6 kn	$d_{\text{designed}}$
Lpp	115.00 m	(CSR+15%SM)		
B	15.80 m	Endurance	5,000	n.mile
D	7.80 m	Complement	10	P
$d_{\text{designed}}$	4.50 m	G. tonnage	abt. 4,300	
DWT	5,000 t	Air draft	<14.00	m
$D_{\text{Scantling}}$	4.50 m	F.O.C.	abt. 7.78 t/d	+5%toler.
DWT	5,000 T	(F.O. 10,200	kcal/kg under	ISO)

### CAPACITY

Container total	182	TEU
In hold	134	TEU
On deck	48	TEU
F.O.T.	220	m <sup>3</sup>
D.O.T.	50	m <sup>3</sup>
F.W.T.	150	m <sup>3</sup>
W.B.T.	1,700	m <sup>3</sup>

### CLASS NOTATION

DNV ✕1A1 ICE-1C, DK(+), IB(+); EO

FLAG: NIS

### MAIN ENGINE

Type	MAN B&W 6L23/30A	1 set
MCR:	960 kW x	900 r/min
CSR :	864 kW x	869 r/min

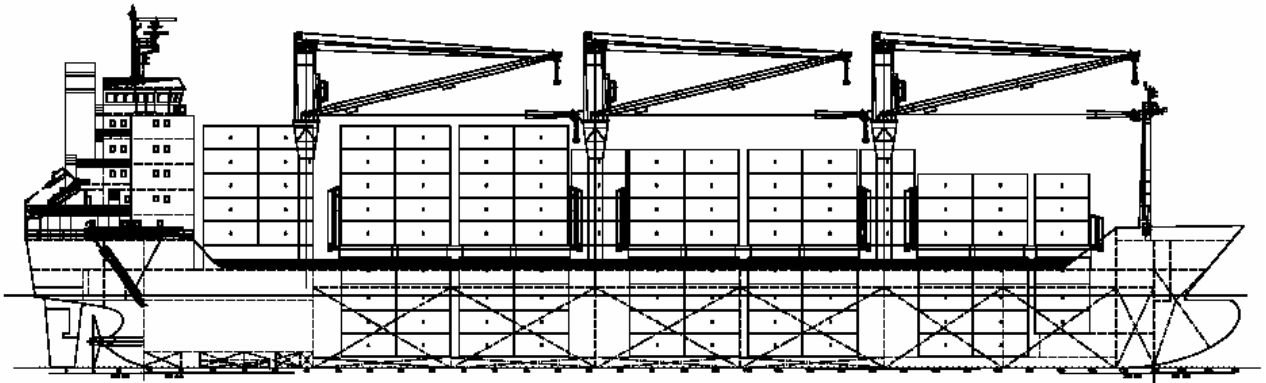
### GENERATOR

Main Generator	2 x 280 kW,	900	r/min
	1 x 440 kW,	900	r/min
Emer. Generator	1 x 75 kW,	1800	r/min
	450V,	60	Hz

### EQUIPMENT

Hatch Cover	Folding type		
Hatch No.1	25.76 x 10.60/5.40	m	Bow thruster
Hatch No.2	25.76 x 10.60	m	1 x 315 kW
Hatch No.3	25.76 x 10.60	m	

## 10,000DWT MPC



### GENERAL DESCRIPTION

This vessel is a sea-going multi-purpose ship with three (3) double hull cargo holds served by three cranes intended to carry bulk and general cargoes as well as containers. DB is reinforced for heavy cargoes and grab operation. The vessel is single screw, motor driven and of a steel construction with a complete upper deck, double bottom and double hull, forecastle, bulbous bow, raked stem, transom stern, and with engine room and the accommodation quarter located aft.

### PRINCIPAL PARTICULARS

Loa abt.	135.70 m	Service speed	17.0 d <sub>designed</sub>
Lpp	128.00 m	(CSR)	
B	20.00 m	Endurance	8,000 n.mile
D	11.00 m	Complement	29 P
d <sub>designed</sub>	8.10 m	G. Tonnage	abt. 8150
DWT	10,000 t		
D <sub>Scantling</sub>	8.10 m	F.O.C.	abt. 27.1 +5%toler.
DWT	10,000 T	(F.O. 10,200 kcal/kg under ISO)	

### CAPACITY

Container total	700 TEU
In hold	236 TEU
On deck	464 TEU
Reefer	70TEU on Deck
Cargo hold 100%	13,500 m <sup>3</sup>
F.O.T.	700 m <sup>3</sup>
D.O.T.	150 m <sup>3</sup>
F.W.T.	150 m <sup>3</sup>

### CLASS NOTATION

BV I ✕HULL ✕MACH General cargo ship, Equipped for carriage of containers, Unrestricted Navigation, Ice Class IC, AUT-UMS.

**FLAG:** SYRIA

### MAIN ENGINE

Type	MAN B&W 7S42MC	1 set
MCR:	7560 kW x	136 r/min
CSR :	6426 kW x	129 r/min

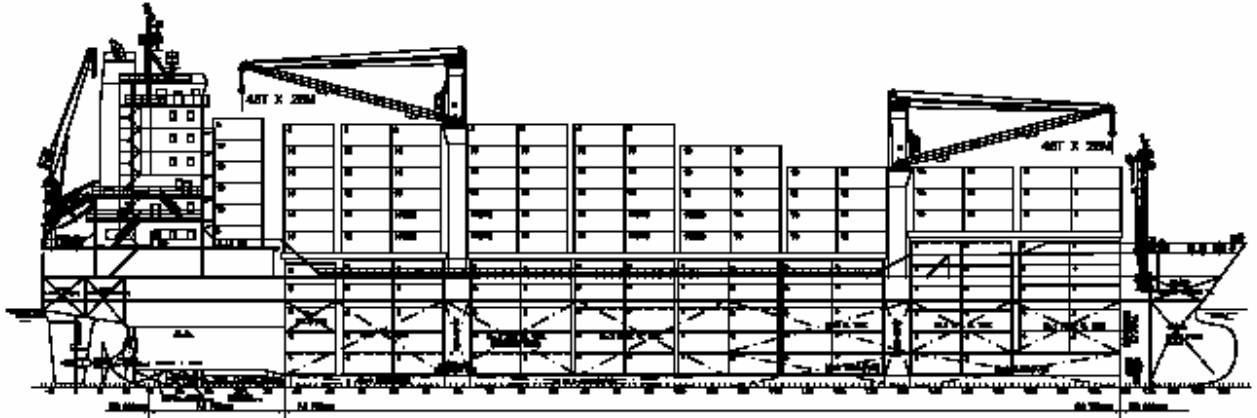
### GENERATOR

Main Generator	3 x 500kW,	900 r/min
	450V,	60 Hz
Emer. Generator	1 x 99W,	1800 r/min

### EQUIPMENT

Hatch Cover	Folding type	Deck crane	35t x 28 m x 3 set
Hatch No.1	19.60x15.20/10.20 m		
Hatch No.2,3	25.90 x 15.20 m		

## 18,000/21,000DWT MPC



### GENERAL DESCRIPTION

This vessel is a sea-going multi-purpose ship with three (3) double hull cargo holds served by two cranes intended to carry bulk and general cargoes as well as containers. DB is reinforced for heavy cargoes and grab operation. No.2 cargo hold with 50.7m length and to be of full box shape suitable for large project cargo. The vessel is single screw, motor driven and of a steel construction with a complete upper deck, double bottom and double hull, forecastle, bulbous bow, raked stem, transom stern, and with engine room and the accommodation quarter (24p complement incl. 4 Suez crew) located aft.

### PRINCIPAL PARTICULARS

Loa abt.	146.00 m	Service speed	14.5 d <sub>designed</sub>
Lpp	137.00 m	(CSR+15%SM)	
B	25.00 m	Endurance	15,000 n.mile
D	13.50 m	Complement	20 P
d <sub>designed</sub>	8.65 m		
DWT	18,000 t		
D <sub>Scantling</sub>	9.60 m	F.O.C.	abt. 22.66 +5%toler.
DWT	21,000 T	(F.O. 10,200 kcal/kg under ISO)	

### CAPACITY

Container total	1296 TEU
In hold	540 TEU
On deck	756 TEU
Reefer	64TEU on Deck
Cargo hold 100%	24,500 m <sup>3</sup>
F.O.T.	1,200 m <sup>3</sup>
D.O.T.	150 m <sup>3</sup>
F.W.T.	200 m <sup>3</sup>

### CLASS NOTATION

GL ✕100A5 MULTI-PURPOSE DRY CARGO SHIP; Strengthened for heavy cargo; G; Equipped for carriage of containers; IWS; ✕MC AUT; SOLAS II-2 Reg. 19: 1.4s, 2, 3, 4, 5.1, 6.1 8&9 in hold No.1-2

**FLAG:** PANAMA

### MAIN ENGINE

Type	MAN B&W 6L42MC-C	1 set
MCR:	5970 kW x	176 r/min
CSR :	5373 kW x	170 r/min

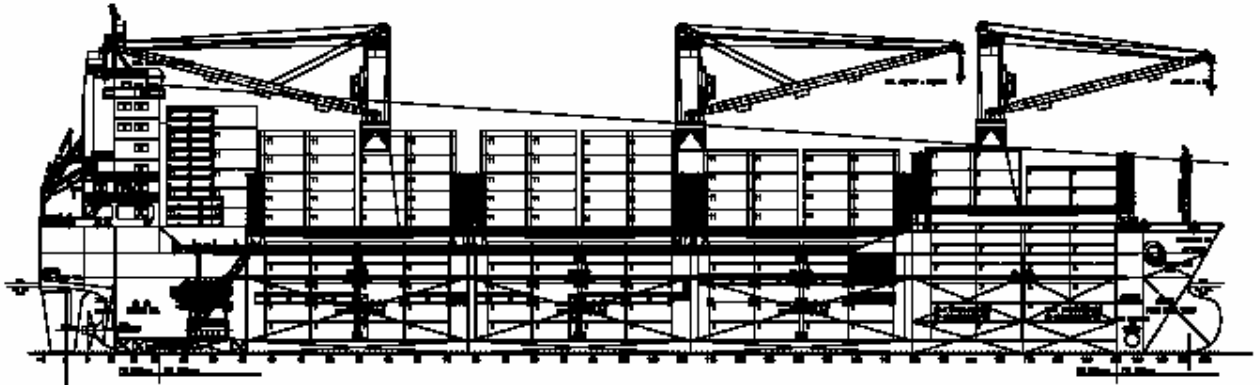
### GENERATOR

Main Generator	3 x 480kW,	900 r/min
	450V,	60 Hz
Emer. Generator	1 x 99W,	1800 r/min

### EQUIPMENT

Hatch Cover	Folding type	Hatch No.3	19500 x 20700 mm
Hatch No.1	12480/13260 x mm	Deck crane	45 x 28 m x 1 set
	15700/20700		45t x 26m x 1 set
Hatch No.2	50700 x 20700 mm	Bow thruster	1 x 600 kW

## 25,000DWT MPC



### GENERAL DESCRIPTION

This vessel is a sea-going multi-purpose ship with four (4) double hull cargo holds served by three cranes intended to carry bulk and general cargoes as well as containers. DB is reinforced for heavy cargoes and grab operation and capable of loading 2 layers x 25t coils. The vessel is single screw, motor driven and of a steel construction with a complete upper deck and a flexible tween deck, double bottom and double hull, forecastle, bulbous bow, raked stem, transom stern, and with engine room and the accommodation quarter located aft. Tween deck covers can also be used as grain tight bulkheads at several positions.

### PRINCIPAL PARTICULARS

Loa abt.	159.99 m	Service speed	14.5	$d_{\text{designed}}$
Lpp	152.00 m	(CSR+15%SM)		
B	27.40 m	Endurance	15,000	n.mile
D	13.50 m	Complement	30	P
$d_{\text{designed}}$	8.50 m			
DWT	21,300 t			
$D_{\text{Scantling}}$	9.50 m	F.O.C.	abt. 24.63	+5%toler.
DWT	25,000 T	(F.O. 10,200	kcal/kg under	ISO)

### CAPACITY

Container total	1492	TEU
In hold	666	TEU
On deck	826	TEU
Reefer	100	on Deck
Cargo hold 100%	34,500	m <sup>3</sup>
F.O.T.	1,200	m <sup>3</sup>
D.O.T.	150	m <sup>3</sup>
F.W.T.	200	m <sup>3</sup>

### CLASS NOTATION

GL ✕100A5 MULTI-PURPOSE DRY CARGO SHIP,E1; Strengthened for heavy cargo; G; Equipped for carriage of containers; IWS; ✕MC E1 AUT; SOLAS II-2 Reg. 19: 1.4s, 2, 3, 4, 5.1, 6.1 8&9 in hold No.1-3

FLAG: PANAMA

### MAIN ENGINE

Type	MAN B&W 6S42MC-C	1 set
MCR:	6480 kW x	136 r/min
CSR :	5832 kW x	132 r/min

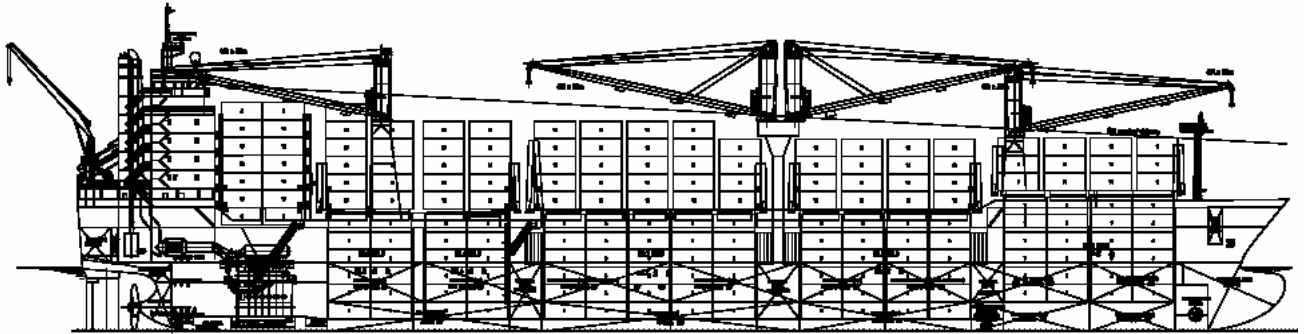
### GENERATOR

Main Generator	3 x 600kW,	900 r/min
	450V,	60 Hz
Emer. Generator	1 x 250kW,	1800 r/min

### EQUIPMENT

Hatch Cover	Folding type (upper deck)	Deck crane	45/70t x 35/20m x 2 sets
Hatch No.1	25280 x 18000 mm		45t x 32m x 1 set
Hatch 2-4	25280 x 23000 mm	Bow thruster	1 x 600 kW

## 25,000DWT MPC (High Speed)



### GENERAL DESCRIPTION

This vessel is a sea-going multi-purpose ship with four (4) double hull cargo holds served by two single and one twin cranes intended to carry bulk and general cargoes as well as containers. DB is reinforced for heavy cargoes and grab operation and capable of loading 2 layers x 15t coils. The vessel is single screw, motor driven and of a steel construction with a complete upper deck and a pontoon tween deck, double bottom and double hull, forecastle, bulbous bow, raked stem, transom stern, and with engine room and the accommodation quarter located aft. Dangerous cargo Class 1.4s, 2, 3, 4, 5.1, 6.1 8 & 9 can be loaded in holds 1-4. Hold No. 2& 3 are arranged with two rows of hatches and installed with dehumidifiers.

### PRINCIPAL PARTICULARS

Loa abt.	178.20 m	Service speed	19.0 kn	$d_{\text{designed}}$
Lpp	167.00 m	(CSR+15%SM)		
B	27.60 m	Endurance	12,000 n.mile	
D	15.50 m	Complement	36 P	
$d_{\text{designed}}$	9.50 m			
DWT	20,000 t			
$D_{\text{Scantling}}$	10.70 m	F.O.C.	abt. 46.4	+5%toler.
DWT	25,000 T	(F.O. 10,200 kcal/kg under ISO)		

### CAPACITY

Container total	1649 TEU
In hold	728 TEU
On deck	921 TEU
Reefer	200 on Deck
Cargo hold 100%	32,000 m <sup>3</sup>
F.O.T.	1,600 m <sup>3</sup>
D.O.T.	180 m <sup>3</sup>
F.W.T.	150 m <sup>3</sup>

### CLASS NOTATION

LR ✕100A1 E General Cargo Ship, Certified for container securing arrangement; Strengthened for heavy cargoes; Strengthened for regular discharge by heavy grabs ; IWS; LI; ✕LMC, UMS

**FLAG:** Hongkong

### MAIN ENGINE

Type	MAN B&W 6S60MC-C	1 set
MCR:	13560 kW x	105 r/min
CSR :	11526 kW x	101.4 r/min

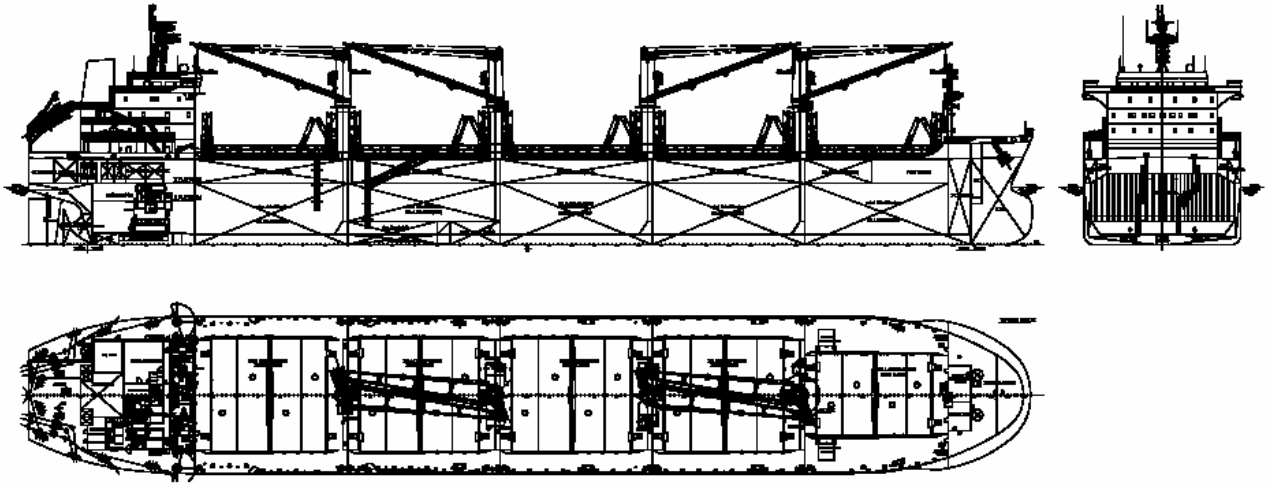
### GENERATOR

Main Generator	3 x ~940kW,	900 r/min
	450V,	60 Hz
Emer. Generator	1 x 250kW,	1800 r/min

### EQUIPMENT

Hatch Cover	Folding type (upper deck)	Deck crane	45/60t x 36/20m	x 1 set twin head
Hatch No.1	25.28 x 18.00 m		45t x 32m	x 1 set
Hatch No.2/3	25.28 / 31.60 x 11.15 m (P&S)		45t x 36m	x 1 set
Hatch 4	12.64 x 23.90 mm	Bow thruster	1 x 850 kW	

## 34,000DWT DSS BULK CARRIER



### GENERAL DESCRIPTION

The vessel is a single screw motor driven bulk carrier with machinery and accommodation located aft, having forecastle and five tiers of deck house. Five (5) double side skin cargo holds with folding type hatch covers are served by four (4) deck cranes. The ship is suitable to carry bulk cargo as well as timber/log cargo.

### PRINCIPAL PARTICULARS

Loa abt.	179.9 m	Service speed	abt. 14.5 kn	$d_{\text{designed}}$
Lpp	172.0 m	(CSR+15%SM)		
B	28.00 m	Endurance	18,000	n.mile
D	15.30 m	Complement	25	P
$d_{\text{designed}}$	10.20 m	G. tonnage	abt. 20,600	
DWT	32,000 t			
Ds	10.70 m	F.O.C.	abt. 25.8 t/d	+5%toler.
DWT	34,000 t	(F.O. 10,200 kcal/kg under ISO)		

### CAPACITY

Cargo Hold			
Grain	abt.	44,000	m <sup>3</sup>
Liquid Tank			
F.O.T.		1,400	m <sup>3</sup>
F.W.T.		180	m <sup>3</sup>
W.B.T.	abt.	18,000	m <sup>3</sup>
	(Inc. Hold	No.3)	

### CLASS NOTATION

GL ✕ 100A5 Bulk Carrier ESP; BC-A (Hold 2, 4 empty); Strengthened for heavy cargo; G; IWS; ✕MC AUT; SOLAS II-2 Reg. 19: Class 1.4s, 2, 3, 4, 5.1, 6.1 8&9 in hold No.1-4 or LR/ABS/BV equivalent

**FLAG:** Panama

### MAIN ENGINE

Type	SULZER 6RTA48T-B	1 set
MCR:	abt. 7530 kW x	116 r/min
CSR :	abt. 6400 kW x	110 r/min

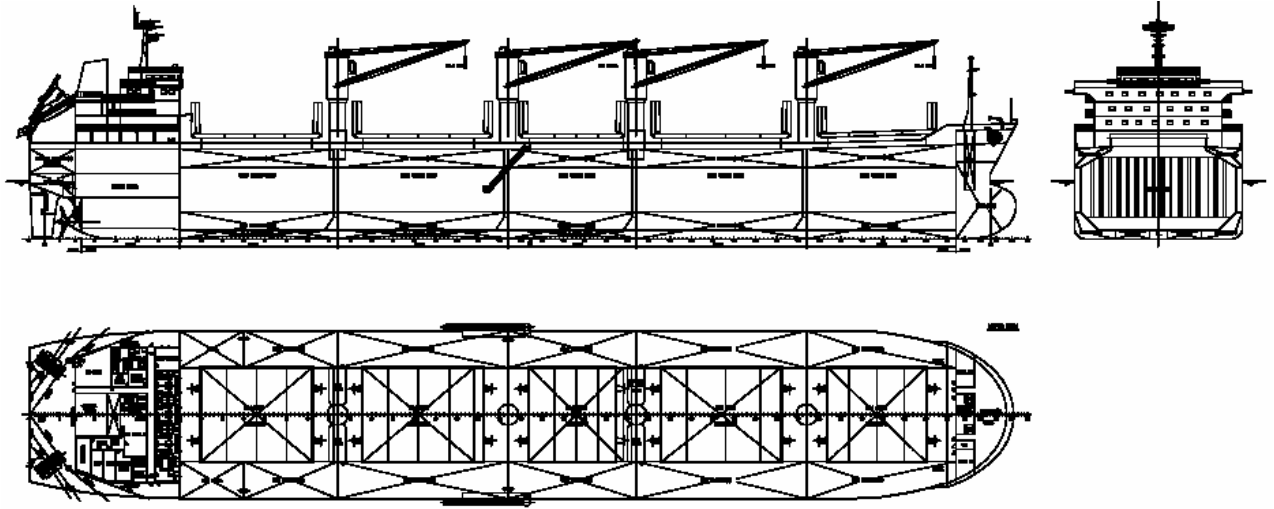
### GENERATOR

Main Generator	3 x 510 kW,	900 r/min
	450V,	60 Hz
Emer. Generator	1 x 125 kW,	1800 r/min

### EQUIPMENT

Crane	4 sets x 30 t x 26m
Hatch Cover	
Hold No.1	20.00 x 14.00 m
Hold No. 2-5	20.80 x 19.60 m

## 54,000DWT DSS BULK CARRIER



### GENERAL DESCRIPTION

The vessel is a single screw motor driven bulk carrier with machinery and accommodation located aft, having forecastle and five tiers of deck house. Five (5) double side skin cargo holds with folding type hatch covers are served by four (4) deck cranes. The ship is suitable to carry bulk cargo as well as timber/log cargo.

### PRINCIPAL PARTICULARS

Loa abt.	189.9 m	Service speed	abt. 14.3 kn	$d_{\text{designed}}$
Lpp	182.0 m	(CSR+15%SM)		
B	32.26 m	Endurance	18,000	n.mile
D	17.50 m	Complement	29	P
$d_{\text{designed}}$	10.70 m	G. tonnage	abt. 32,000	
DWT	43,700 t			
Ds	12.50 m	F.O.C.	abt. 31.45 t/d	+5%toler.
DWT	54,000 t	(F.O. 10,200 kcal/kg under ISO)		

### CAPACITY

Cargo Hold			
Grain	abt.	65,600	m <sup>3</sup>
Liquid Tank			
F.O.T.		1,800	m <sup>3</sup>
F.W.T.		250	m <sup>3</sup>
W.B.T.	abt.	17,000	m <sup>3</sup>
	(Excl. No.3 Hold)		

### CLASS NOTATION

LR ✕100A1, Bulk Carrier ESP, Strengthened for heavy cargoes, HoldsNo.2, 4 may be empty; ✕LMC, UMS or other IACS equivalent

**FLAG:** Panama

### MAIN ENGINE

Type	MAN B&W 6S50MC	1 set
MCR:	abt. 8580 kW x	127 r/min
CSR :	abt. 7722 kW x	124 r/min

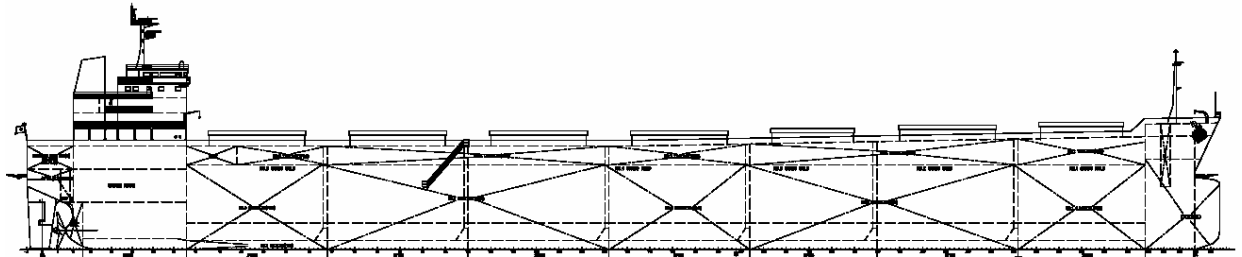
### GENERATOR

Main Generator	3 x 530 kW,	900 r/min
	450V,	60 Hz
Emer. Generator	1 x 99 kW,	1800 r/min

### EQUIPMENT

Crane	4 sets x 30 t x 26m	
Hatch Cover		Hold No. 5 20.50 x 18.04 m
Hold No.1	18.86 x 18.04 m	
Hold No. 2-4	21.32 x 18.04 m	

## 80,000DWT DSS PANAMAX BULK CARRIER



### GENERAL DESCRIPTION

The vessel to be a single screw motor driven bulk carrier with machinery and accommodation located aft, have forecastle and five tiers of deck house. Ship to have seven double skin cargo holds with top and lower wing tank. The cargo hatch served by weather tight steel side rolling type hatch covers. Latest SOLAS and IACS requirements including PMA are satisfied.

### PRINCIPAL PARTICULARS

Loa abt.	229.80	m	Service speed	abt. 14.8 kn	$d_{\text{designed}}$
Lpp	222.00	m	(CSR + 15%SM)		
B	32.26	m	Endurance	18,000	n mile
D	19.90	m	Complement	25	P
$d_{\text{designed}}$	12.20	m	Gross tonnage	abt. 43,500	
DWT	65,000	t	FOC (Eng.guide)	abt. 29.66 t/d	
Ds	14.35	m	(at CSR with 15% S.M)		
DWT	80,000	t	(Fuel Oil 10,200 kcal/kg under ISO)		

### CAPACITY

Cargo Hold			
Grain	abt.	94,000	m <sup>3</sup>
			m <sup>3</sup>
Liquid Tank			m <sup>3</sup>
F.O.T.		2,200	m <sup>3</sup>
F.W.T.		300	m <sup>3</sup>
W.B.T.	abt.	34,000	m <sup>3</sup>
	(Inc. Hold	No.4)	

### CLASS NOTATION

BV I ✕HULL, Bulk Carrier ESP, BC-A (Holds No.2, 4, 6 Empty); VeriSTAR; Unrestricted Navigation; GRAB LOADING; IN WATER SURVEY; ✕ MACH, AUT-UMS or other **IACS Class equivalent**

**FLAG:** Panama

### MAIN ENGINE

Type	MAN B&W 6S60MC	1 set
MCR:	9600 kW x 90 r/min	
CSR :	8640 kW x 87 r/min	

### MAIN GENERATOR

Generator		3 sets
	3 x 660 kW,	900 r/min
	450V,	60 Hz
Emer. Gen.	1 x 138 kW	x1800 r/min

### SPECIAL EQUIPMENT

Crane	Nil	
Hatch Cover		
Hold No. 1,3	15.750 x 15.000	M
Other holds	18.375 x 15.000	M